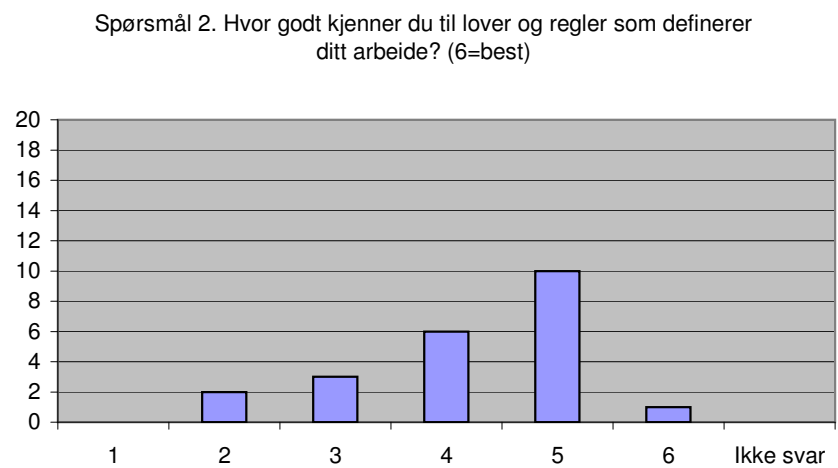
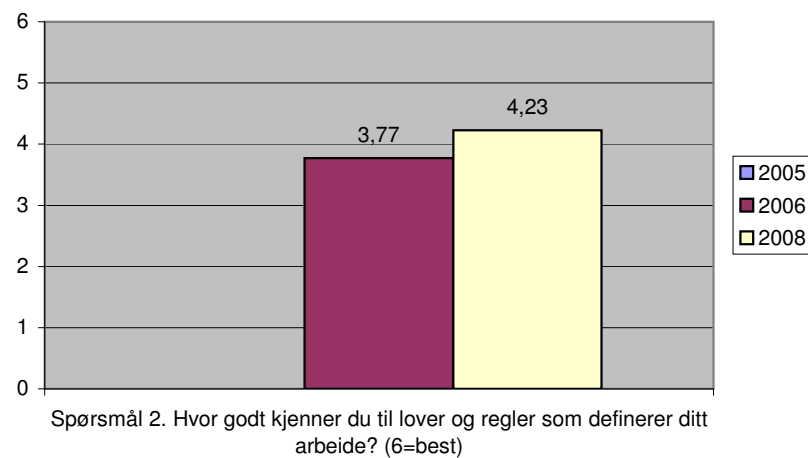
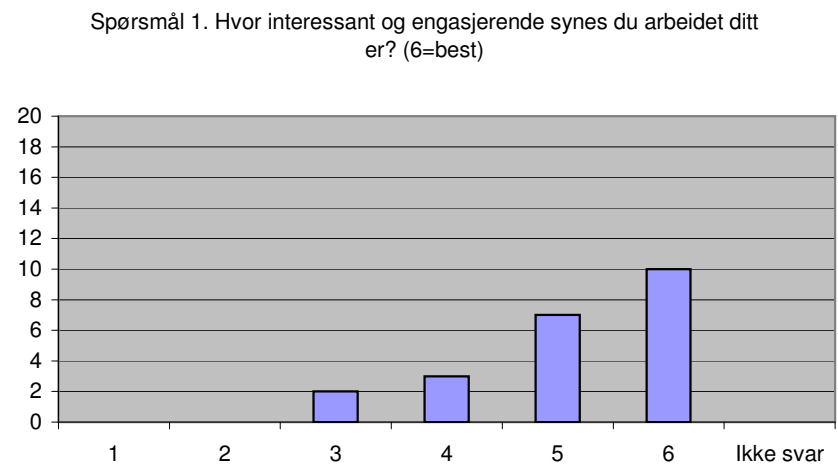
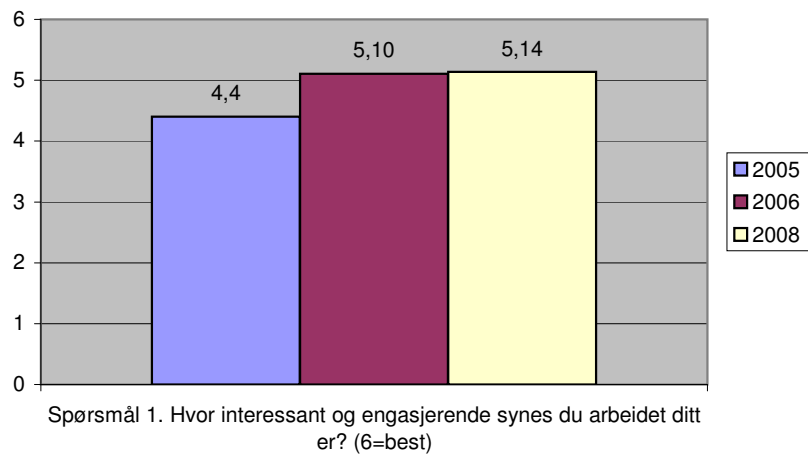
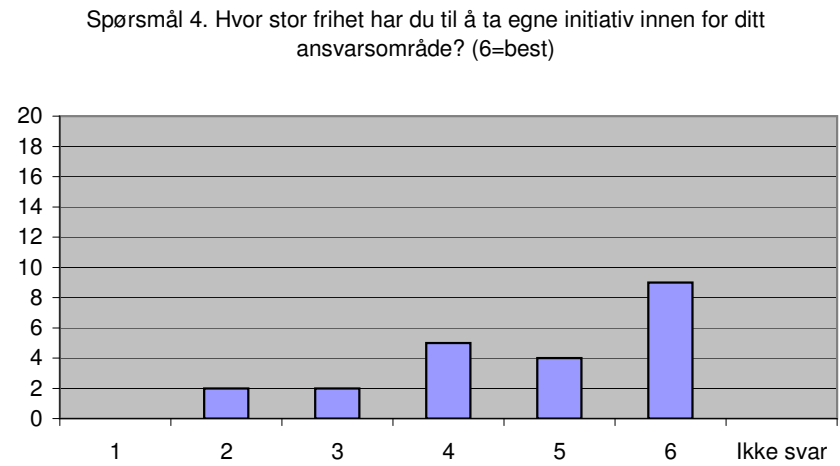
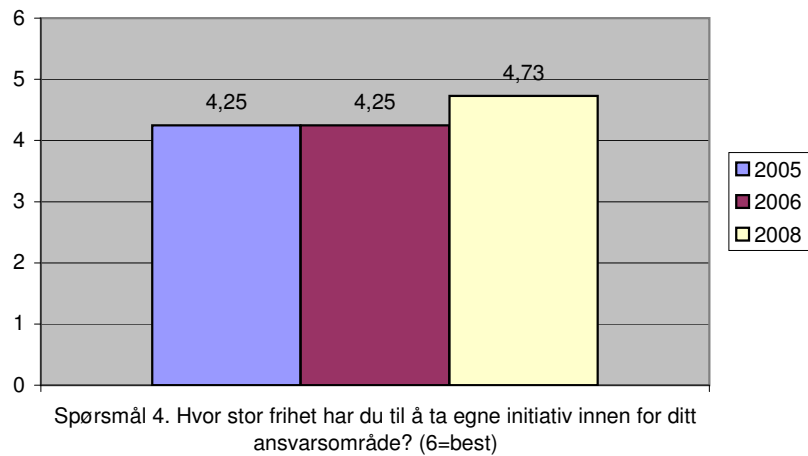
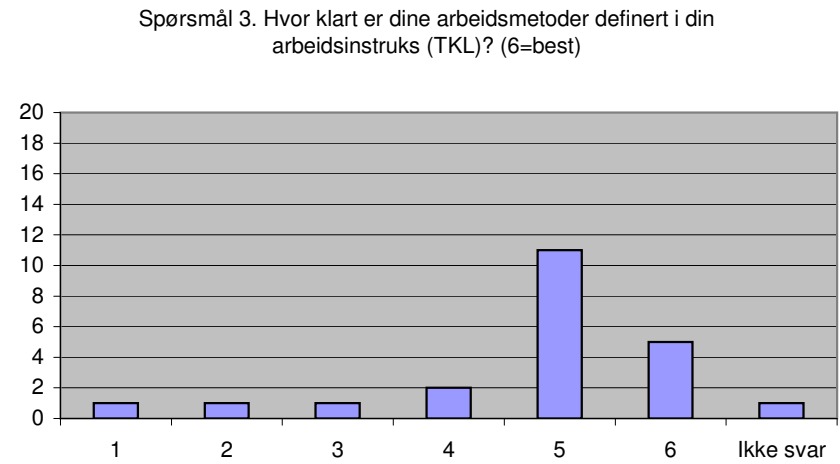
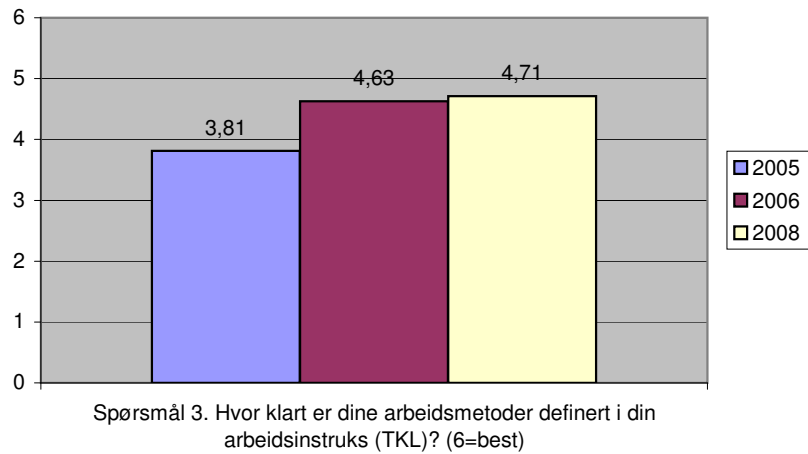
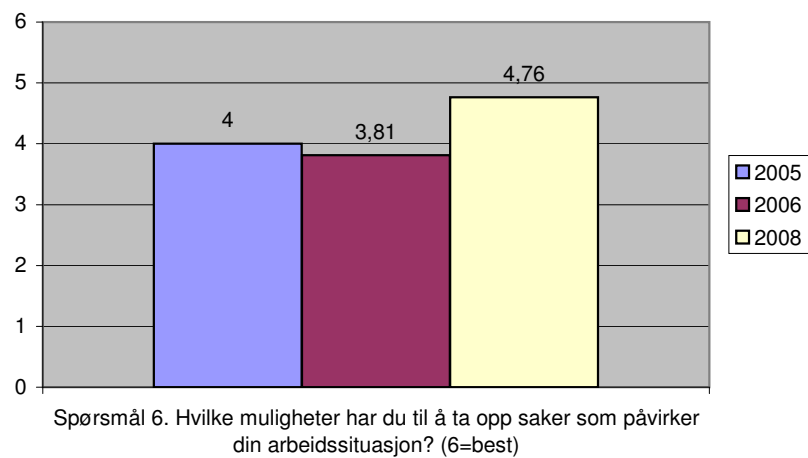
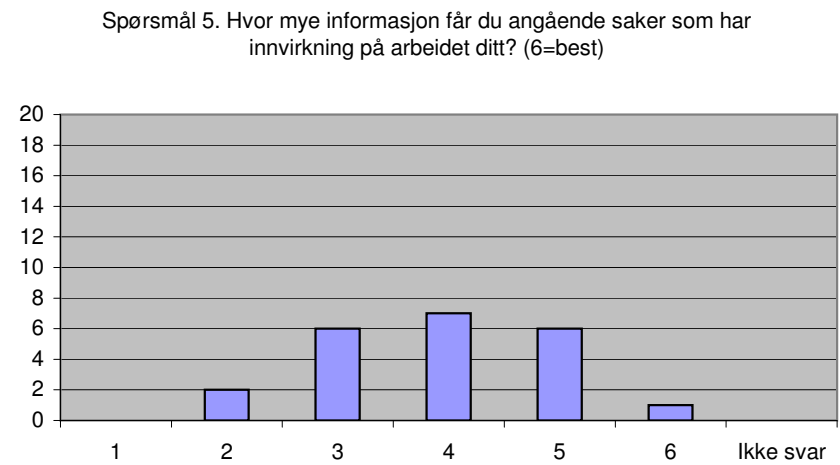
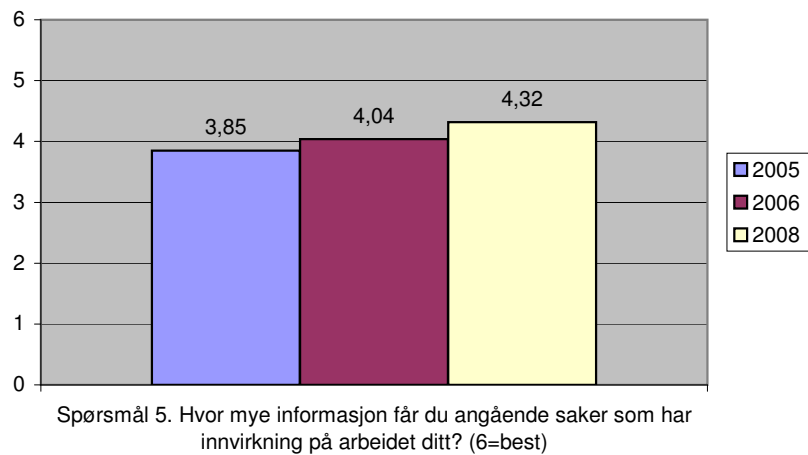
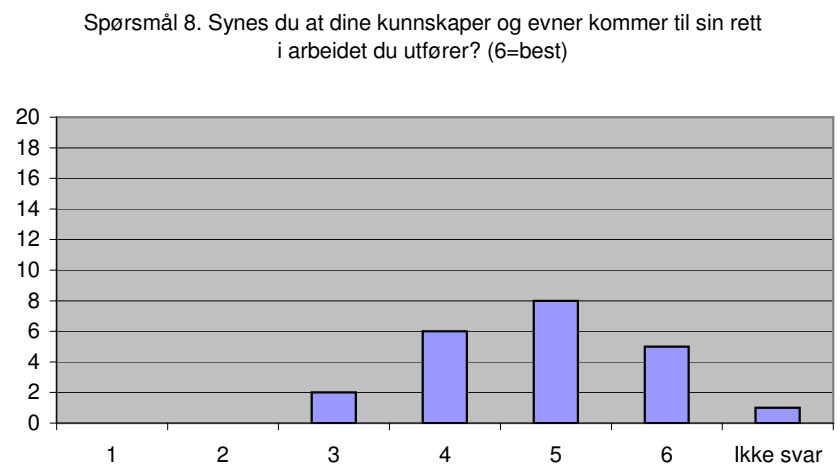
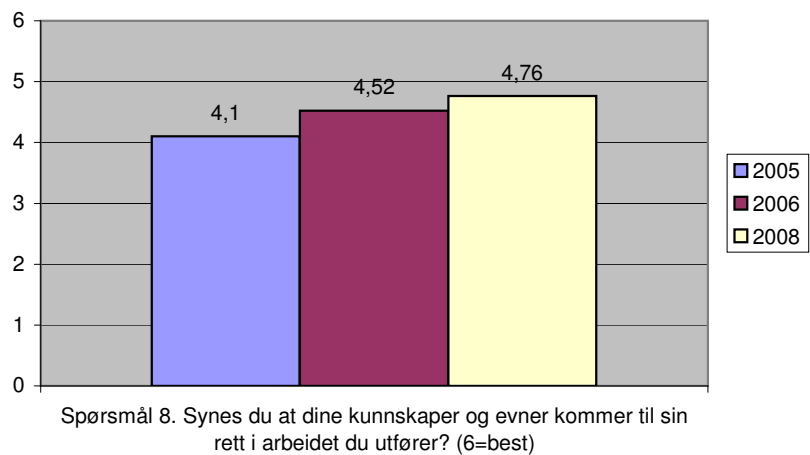
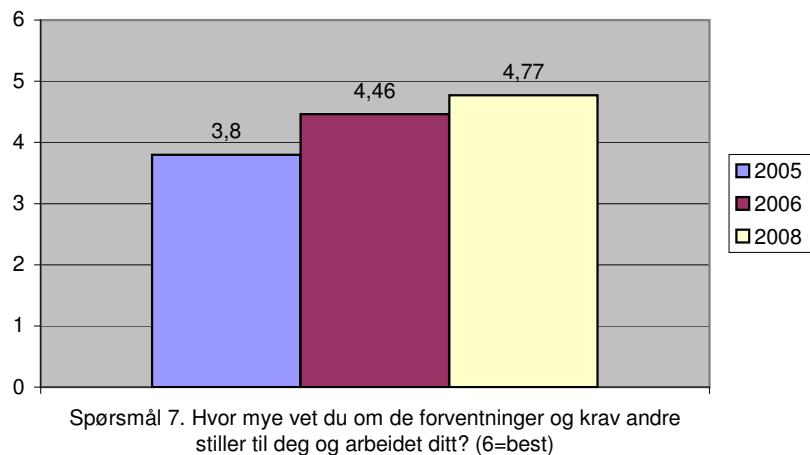


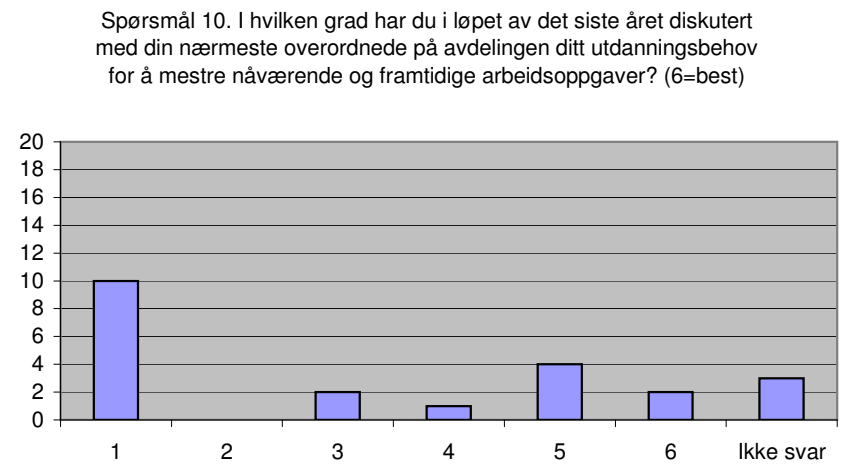
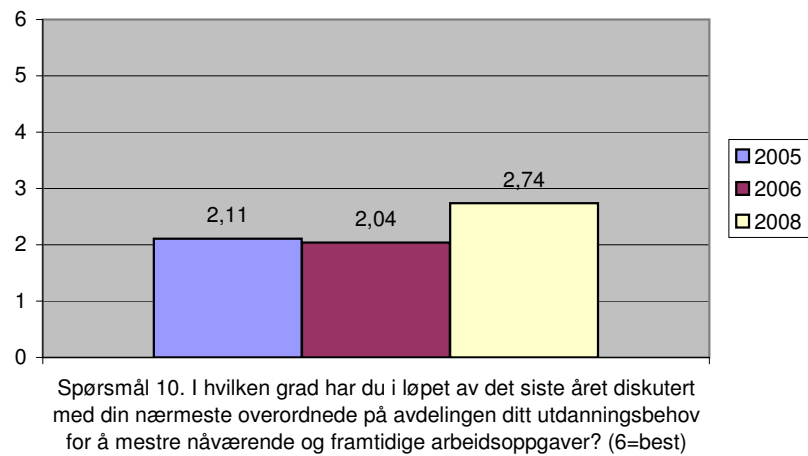
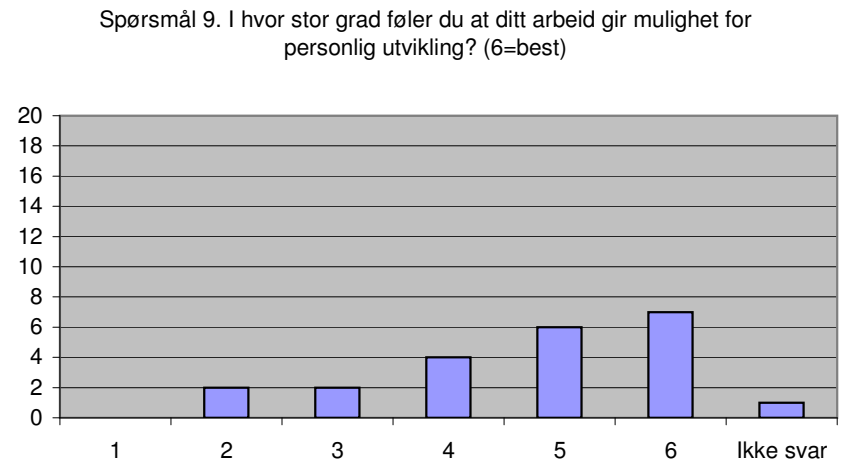
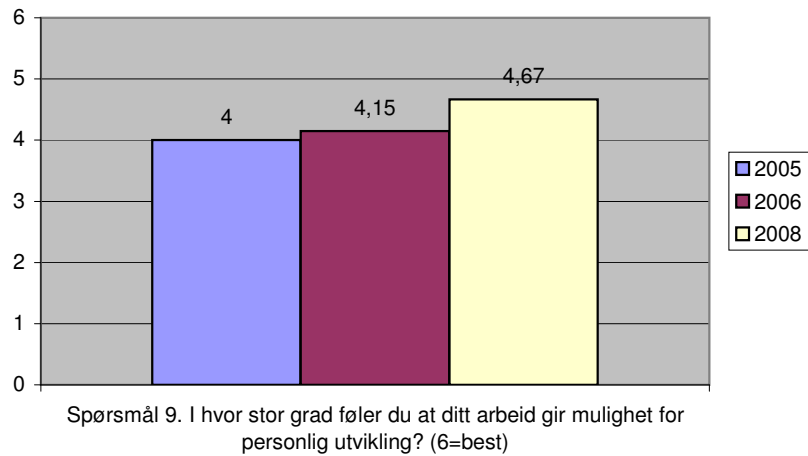
Trivselsanalyse - Villa Skaar AS 2008

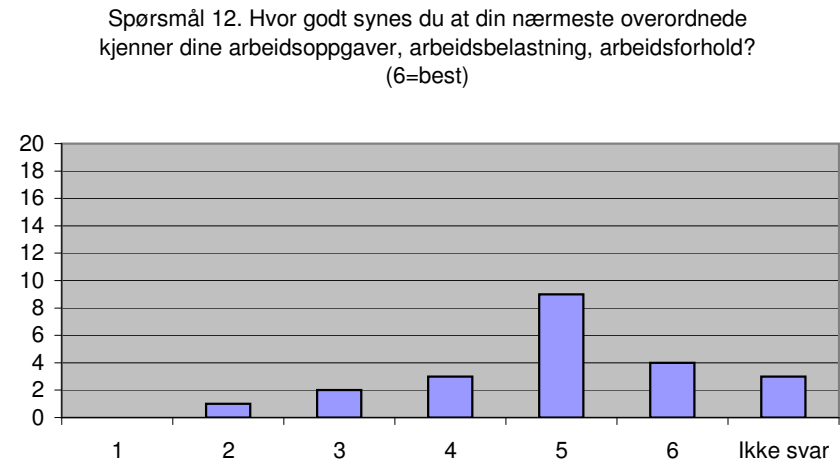
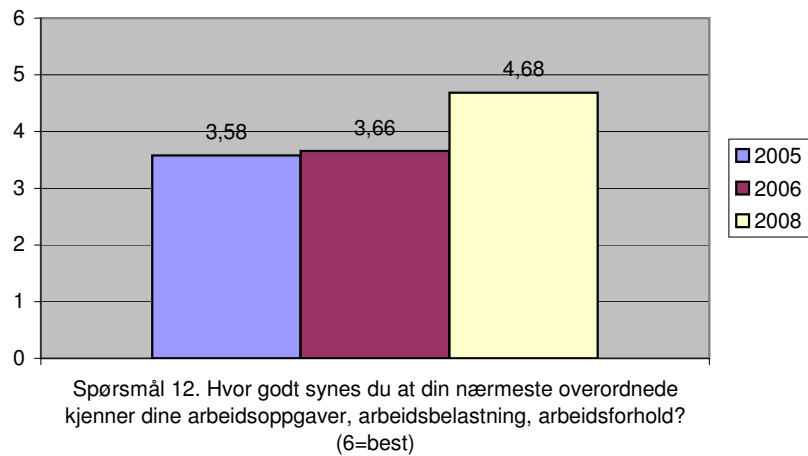
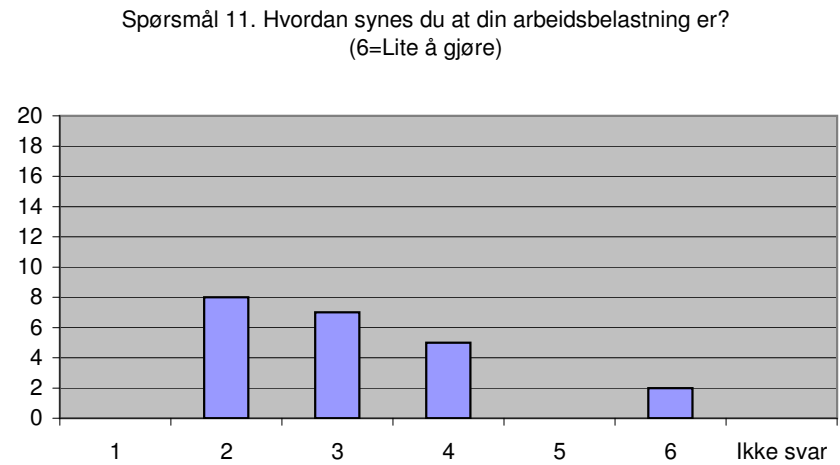
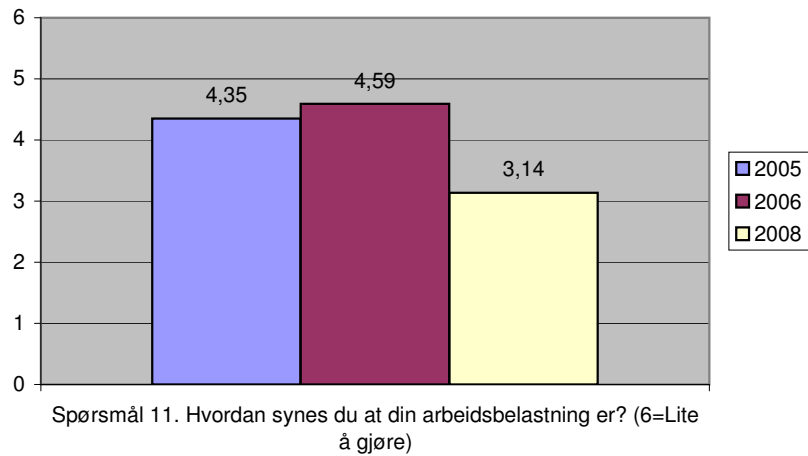


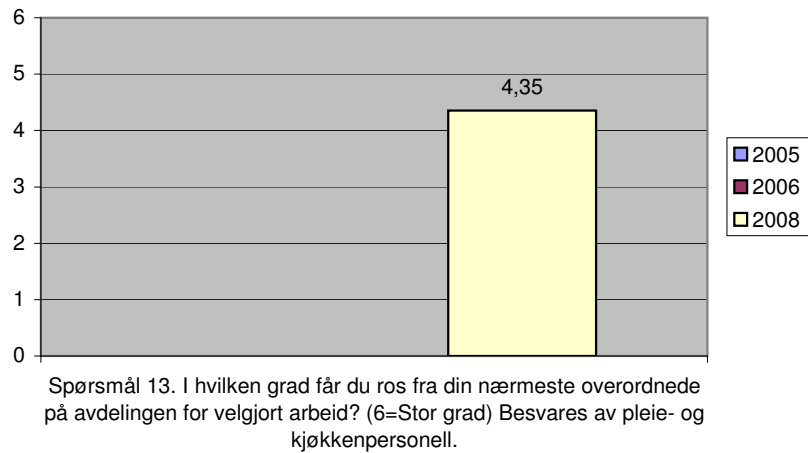




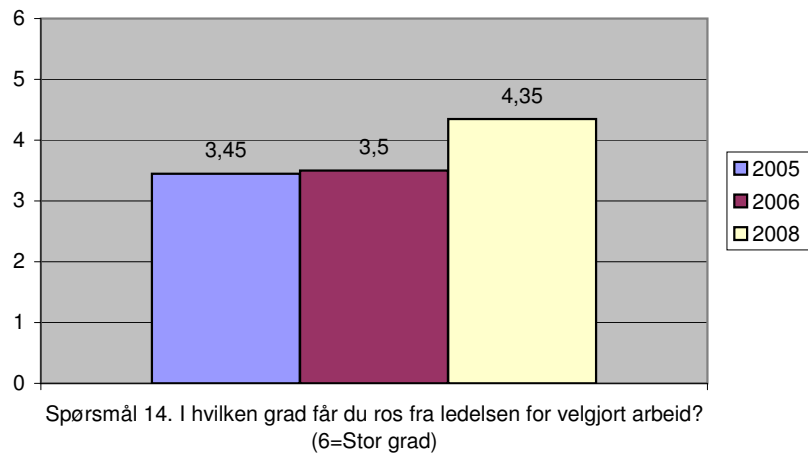
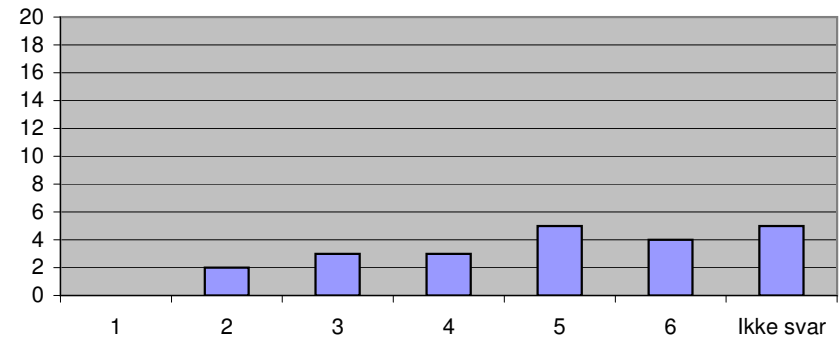




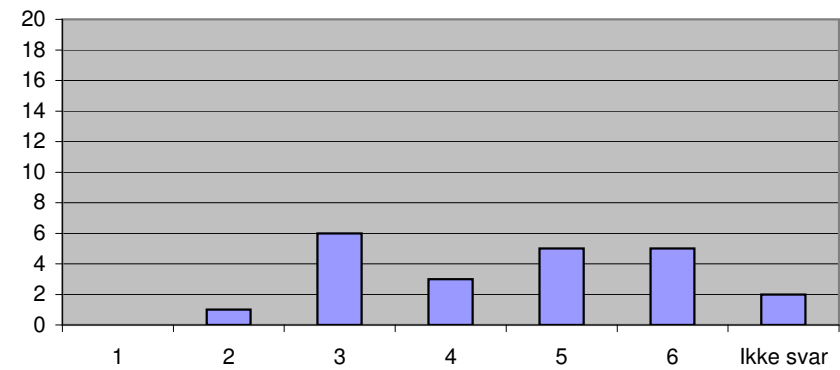


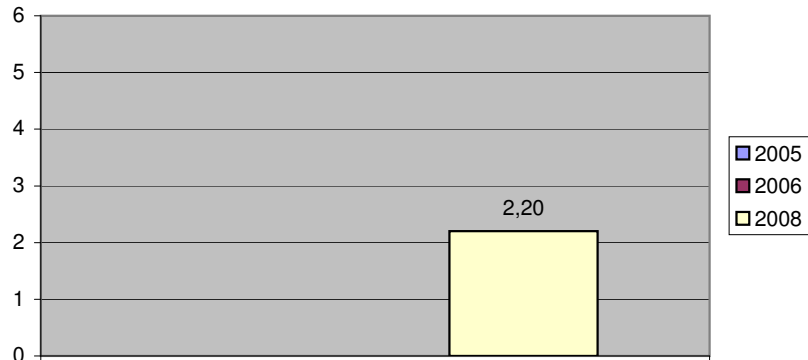


Spørsmål 13. I hvilken grad får du ros fra din nærmeste overordnede på avdelingen for velgjort arbeid? (6=Stor grad) Besvares av pleie- og kjøkkenpersonell.



Spørsmål 14. I hvilken grad får du ros fra ledelsen for velgjort arbeid? (6=Stor grad)

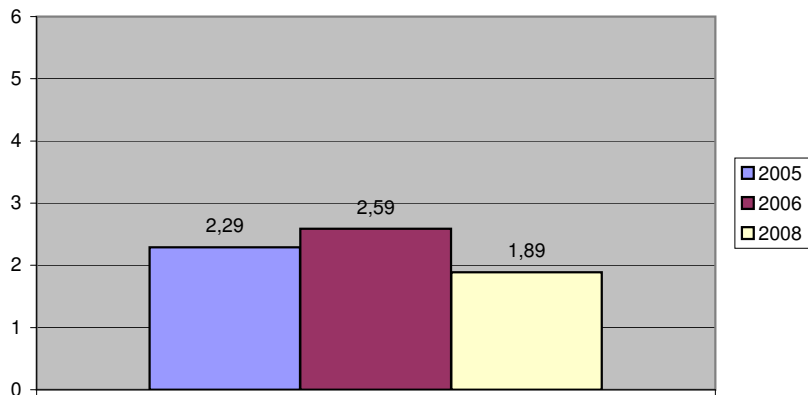




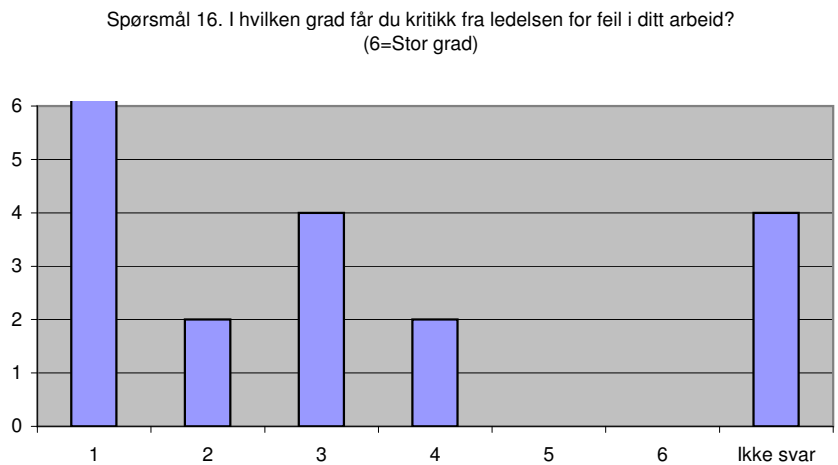
Spørsmål 15. I hvilken grad får du kritikk fra din nærmeste overordnede på avdelingen for feil i ditt arbeid? (6=Stor grad)
Besvares av pleie- og kjøkkenpersonell.



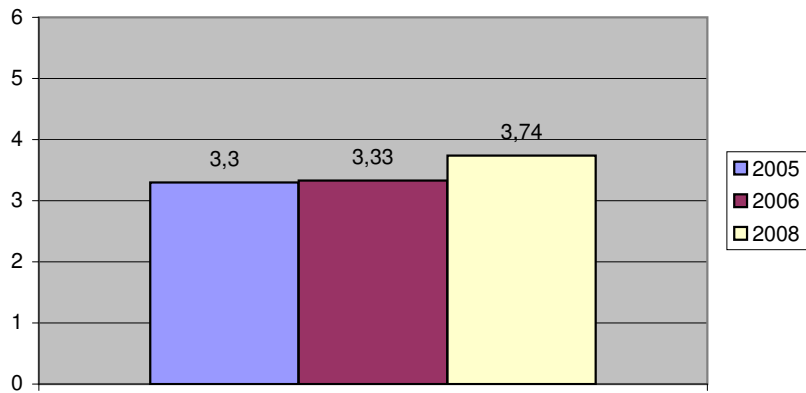
Spørsmål 15. I hvilken grad får du kritikk fra din nærmeste overordnede på avdelingen for feil i ditt arbeid? (6=Stor grad)
Besvares av pleie- og kjøkkenpersonell.



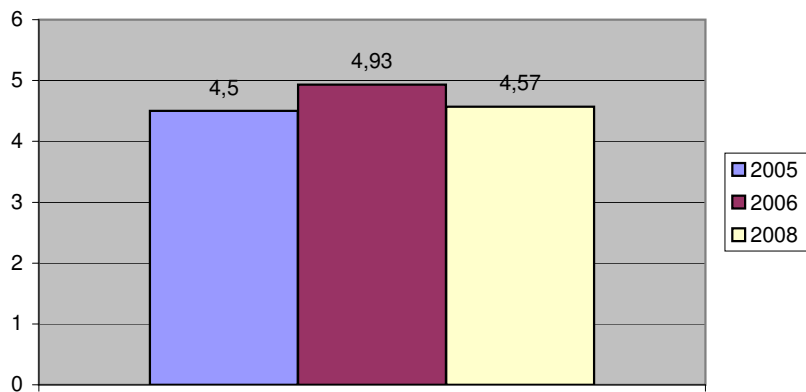
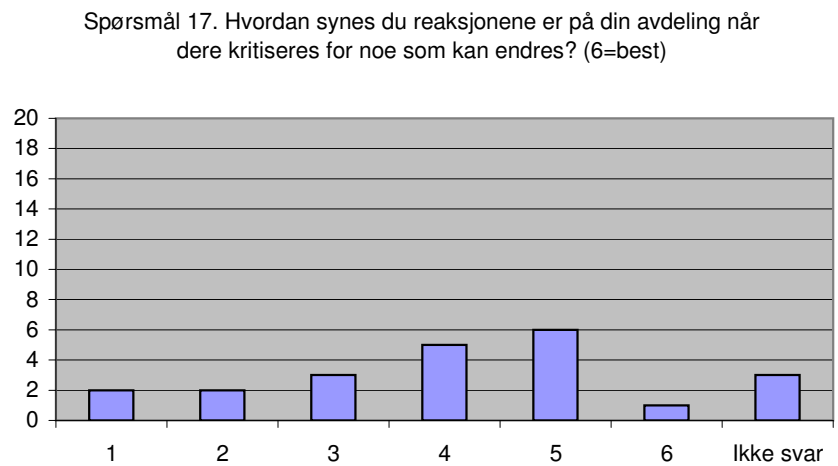
Spørsmål 16. I hvilken grad får du kritikk fra ledelsen for feil i ditt arbeid?
(6=Stor grad)



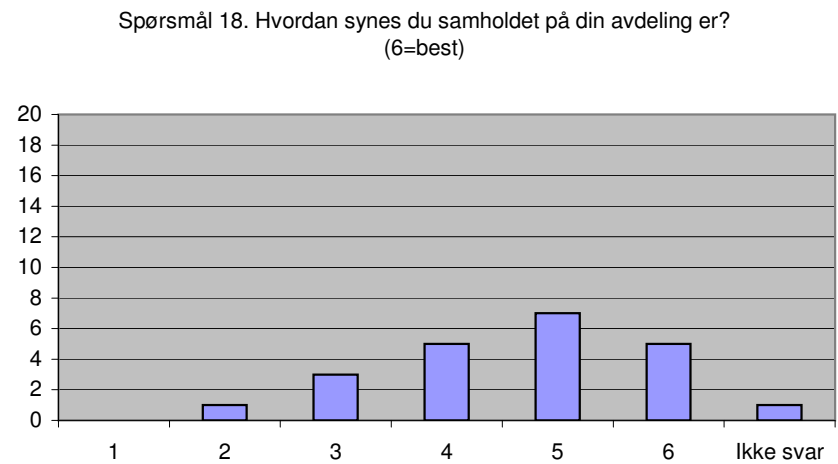
Spørsmål 16. I hvilken grad får du kritikk fra ledelsen for feil i ditt arbeid?
(6=Stor grad)

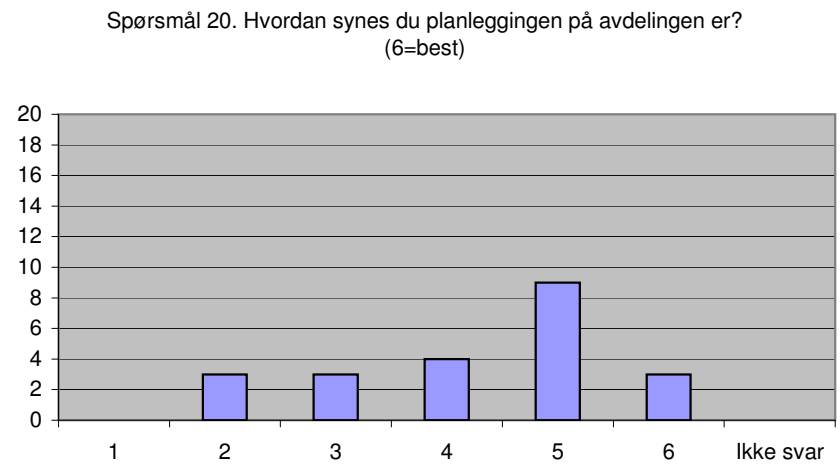
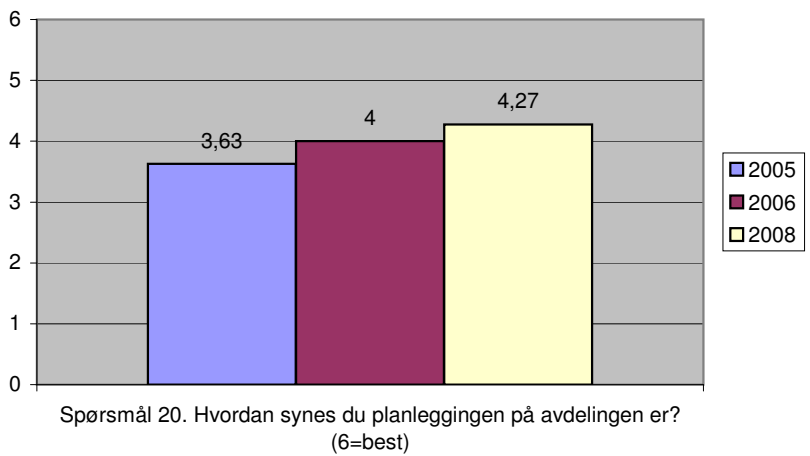
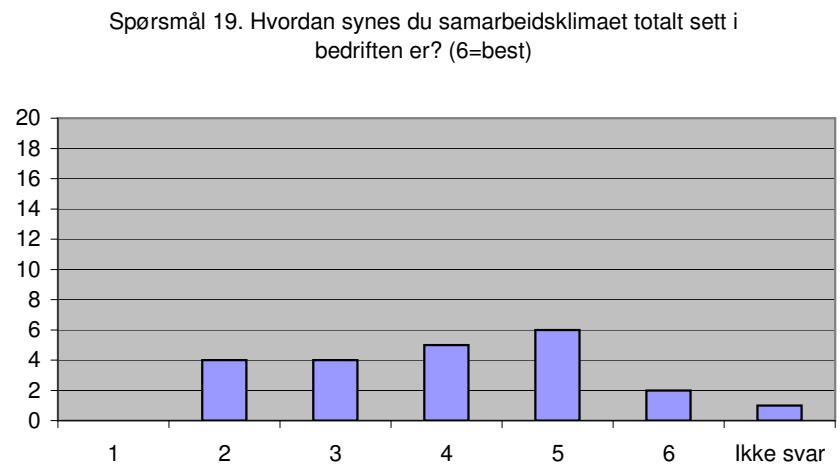
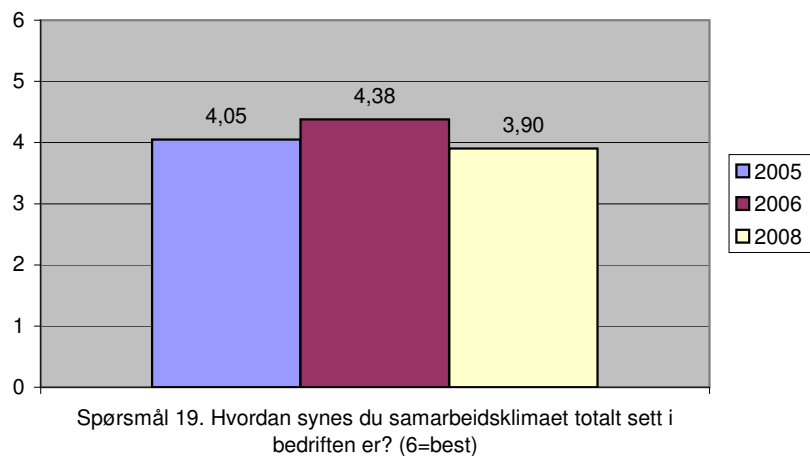


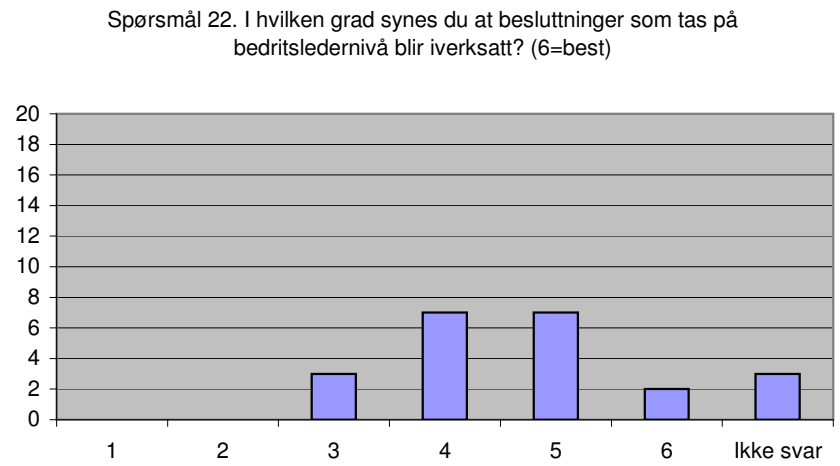
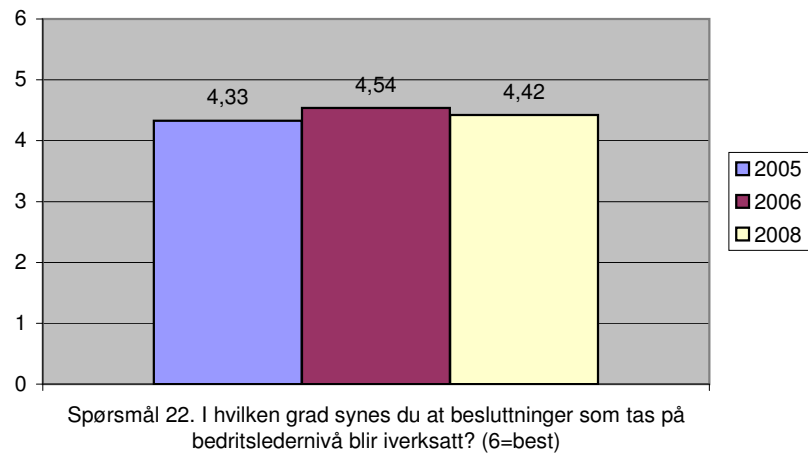
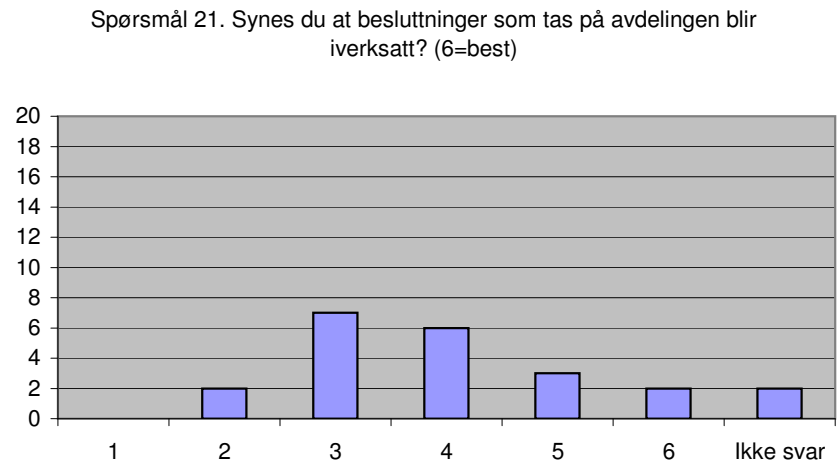
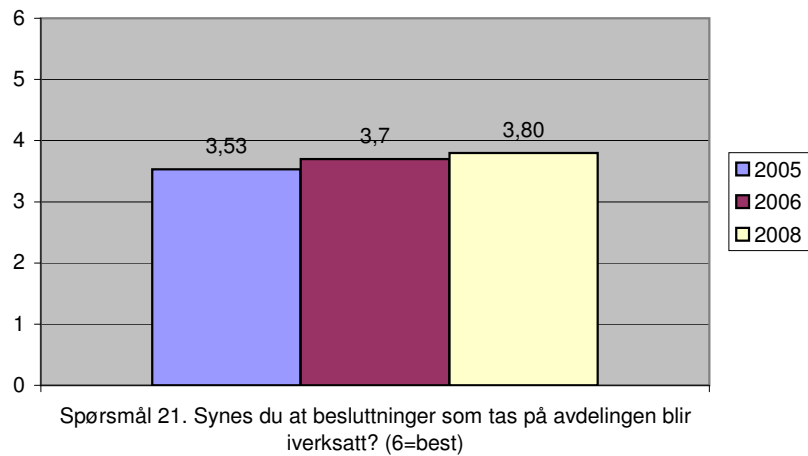
Spørsmål 17. Hvordan synes du reaksjonene er på din avdeling når dere kritiseres for noe som kan endres? (6=best)

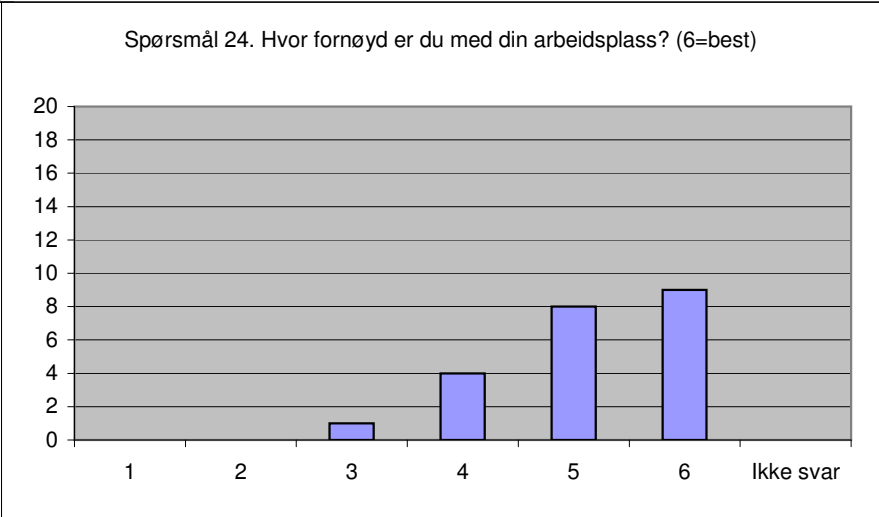
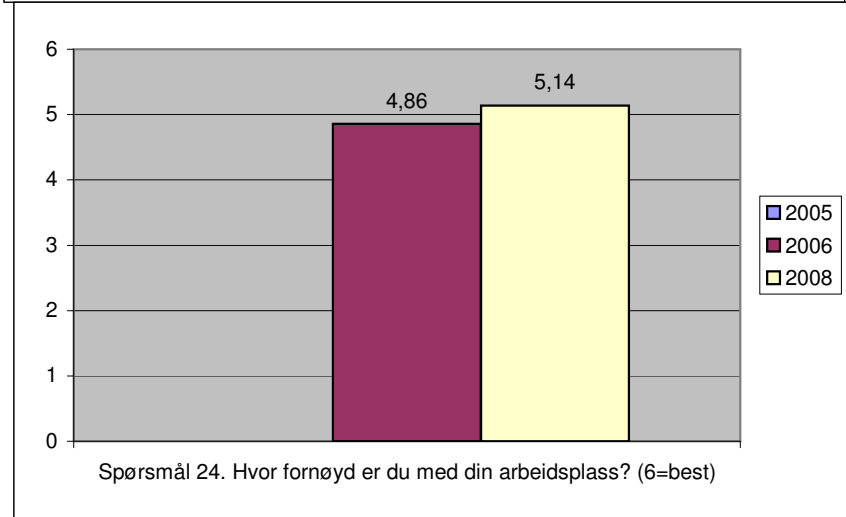
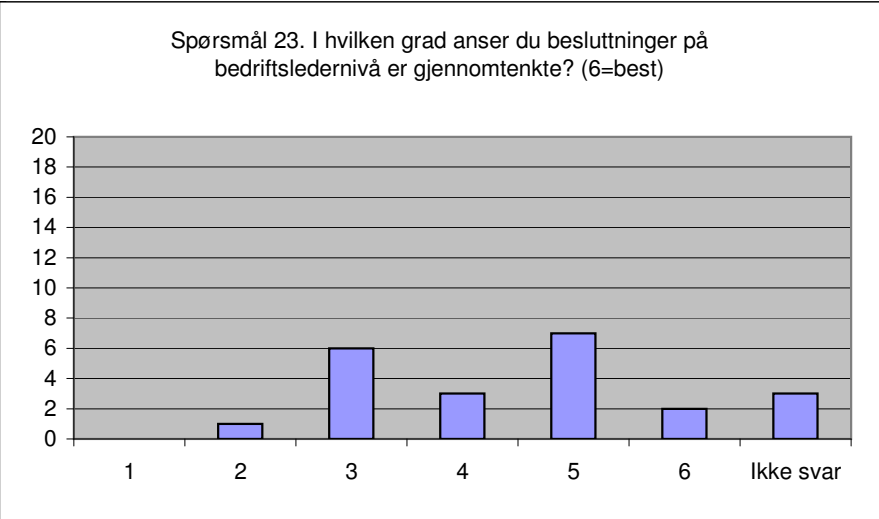
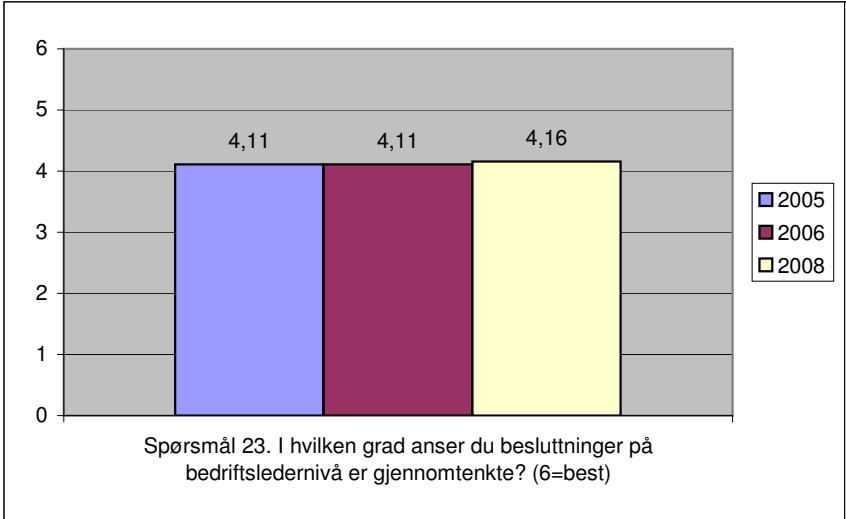


Spørsmål 18. Hvordan synes du samholdet på din avdeling er? (6=best)









Svarprosent

